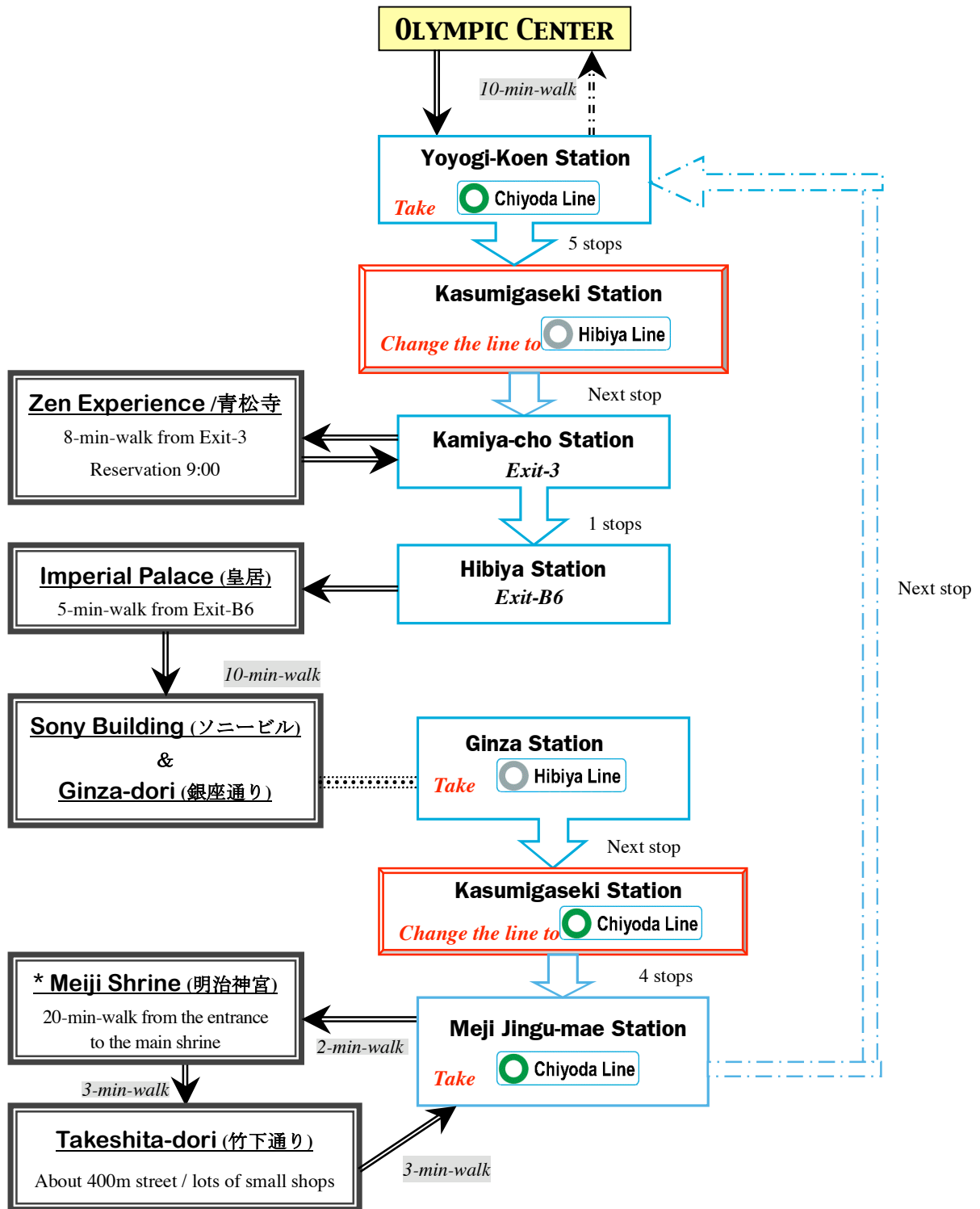


# Michigan City High School

## Study Day -1

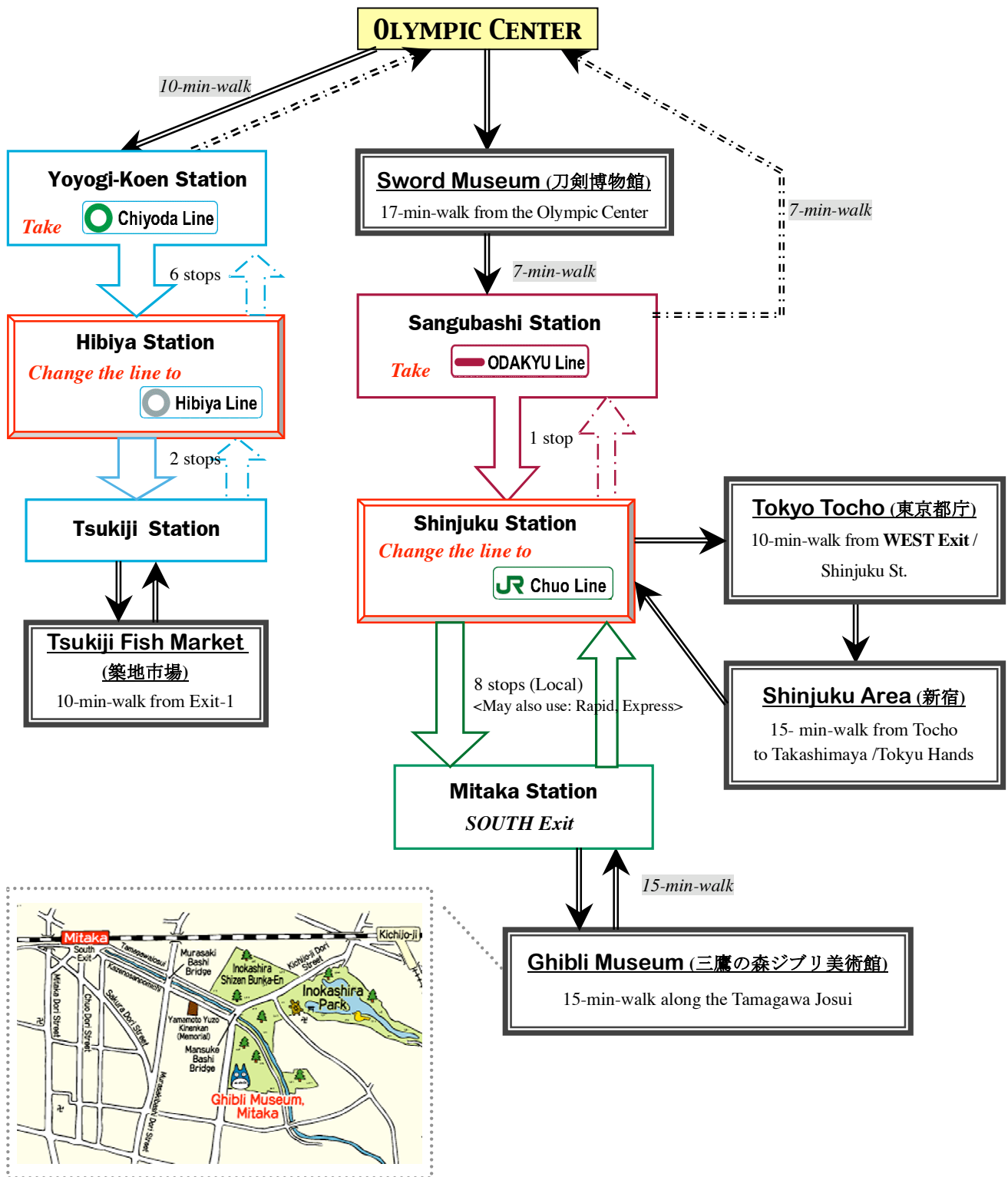


**Transportation**

<p>Tokyo Metro Subway</p> <ul style="list-style-type: none"> <li>GINZA Line</li> <li>CHIYODA Line</li> <li>HIBIYA Line</li> <li>TOZAI Line</li> <li>MARUNOUCHI Line</li> <li>YURAKUCHO Line</li> <li>HANZOMON Line</li> <li>NANBOKU Line</li> </ul>		<p>TOEI Subway Tokyo Metropolitan Government</p> <ul style="list-style-type: none"> <li>OEDO Line</li> <li>ASAKUSA Line</li> <li>MITA Line</li> <li>SHINJUKU Line</li> </ul>	<p>Tokyo Waterfront New Transit YURIKAMOME</p>
		<p>East Japan Railway Co. JR EAST</p>	<p>ODAKYU Electric Railway ODAKYU</p>

# Michigan City High School

## Study Day -2

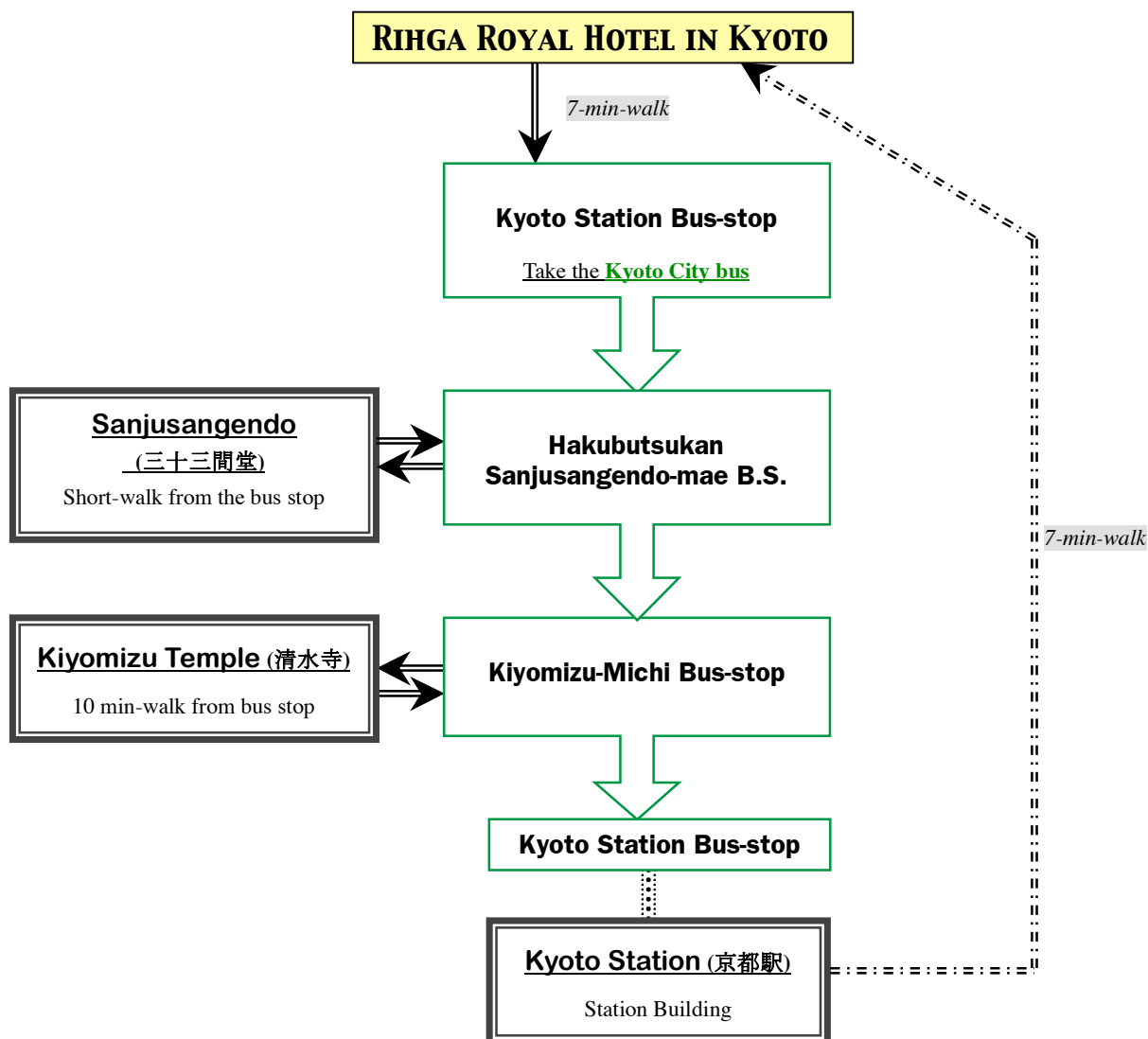


### Transportation

Tokyo Metro Subway		TOEI Subway Tokyo Metropolitan Government		Tokyo Waterfront New Transit YURIKAMOME	
GINZA Line	MARUNOUCHI Line	OEDO Line	ASAKUSA Line	East Japan Railway Co. JR EAST	
CHIYODA Line	YURAKUCHO Line	MITA Line	SHINJUKU Line	ODAKYU Electric Railway ODAKYU	
HIBIYA Line	HANZOMON Line				
TOZAI Line	NANBOKU Line				

# Michigan City High School

## Study Day -3



### **Transportation**

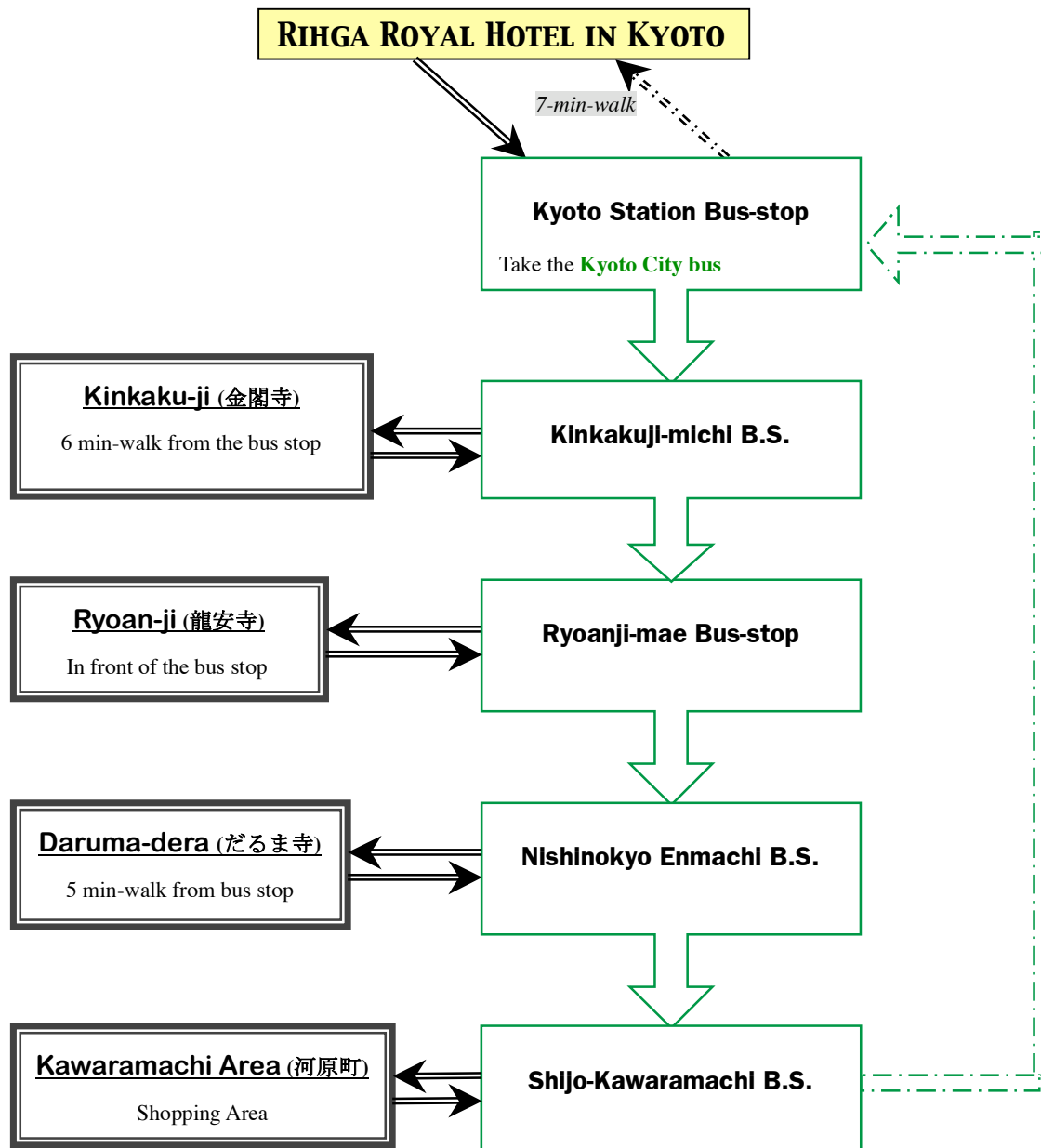
You will use **Kyoto City Bus** for traveling in Central Kyoto.

**One-day City Bus Pass:** The first time you get on the bus, insert your card into the small reading device near the driver where the date will be recorded on the back of the card. The next time you get on the bus, just show the back of the card to the driver.

***Attn: Please check the Bus numbers and the detailed information with NPJ-tourguide in Kyoto.***

# Michigan City High School

## Study Day -4



### Transportation

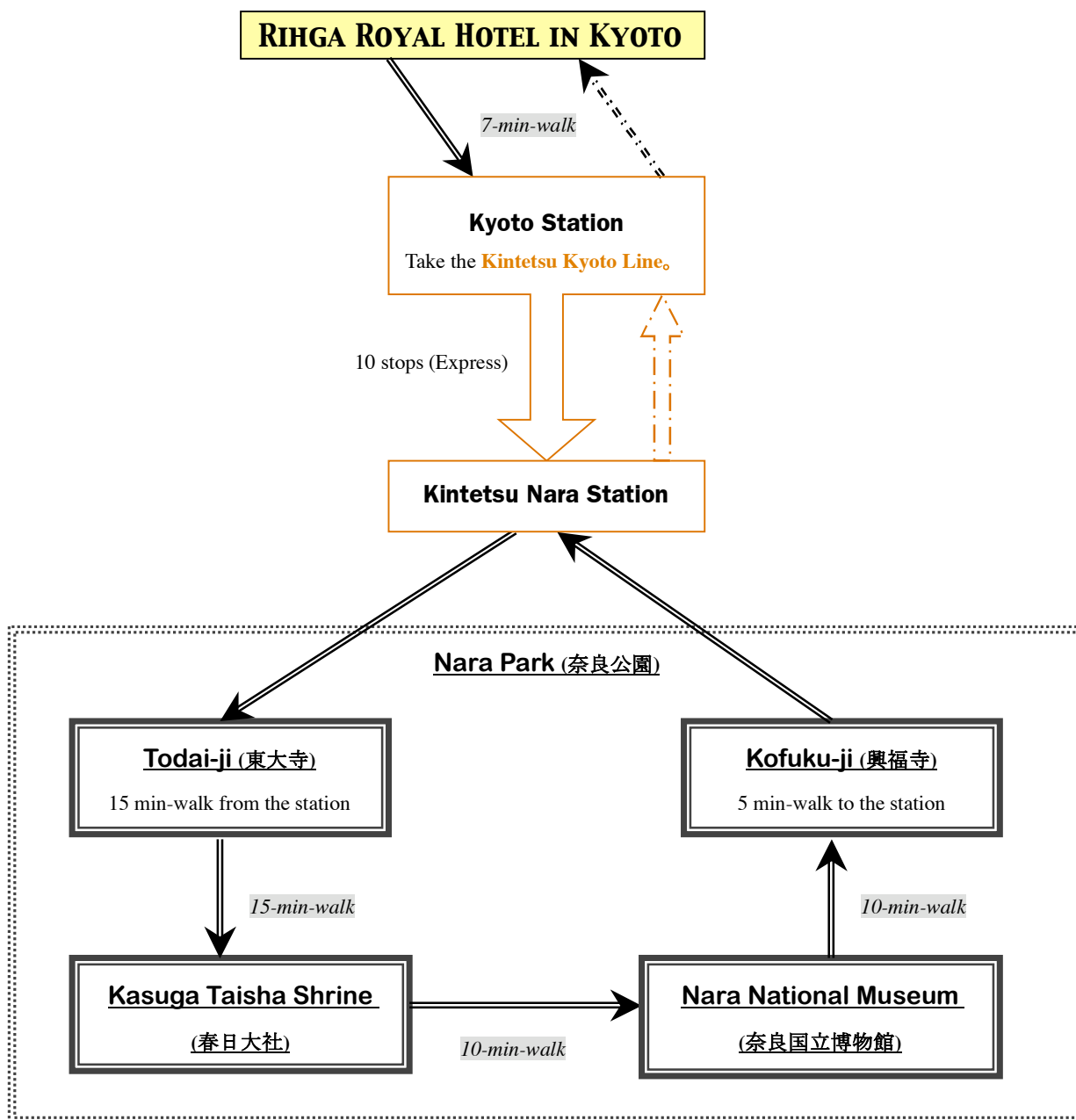
You will use **Kyoto City Bus** for traveling in Central Kyoto.

**One-day City Bus Pass:** The first time you get on the bus, insert your card into the small reading device near the driver where the date will be recorded on the back of the card. The next time you get on the bus, just show the back of the card to the driver.

***Attn: Please check the Bus numbers and the detailed information with NPJ-tourguide in Kyoto.***

# Michigan City High School

## Study Day – 5



### **Transportation**

You will use **Kintetsu Kyoto Line / the express train(急行)** to go to Nara.

Please take the express train (急行) .

***Attn:** Please check the timetable of this line and the detailed information with NPJ-tourguide in Kyoto.*