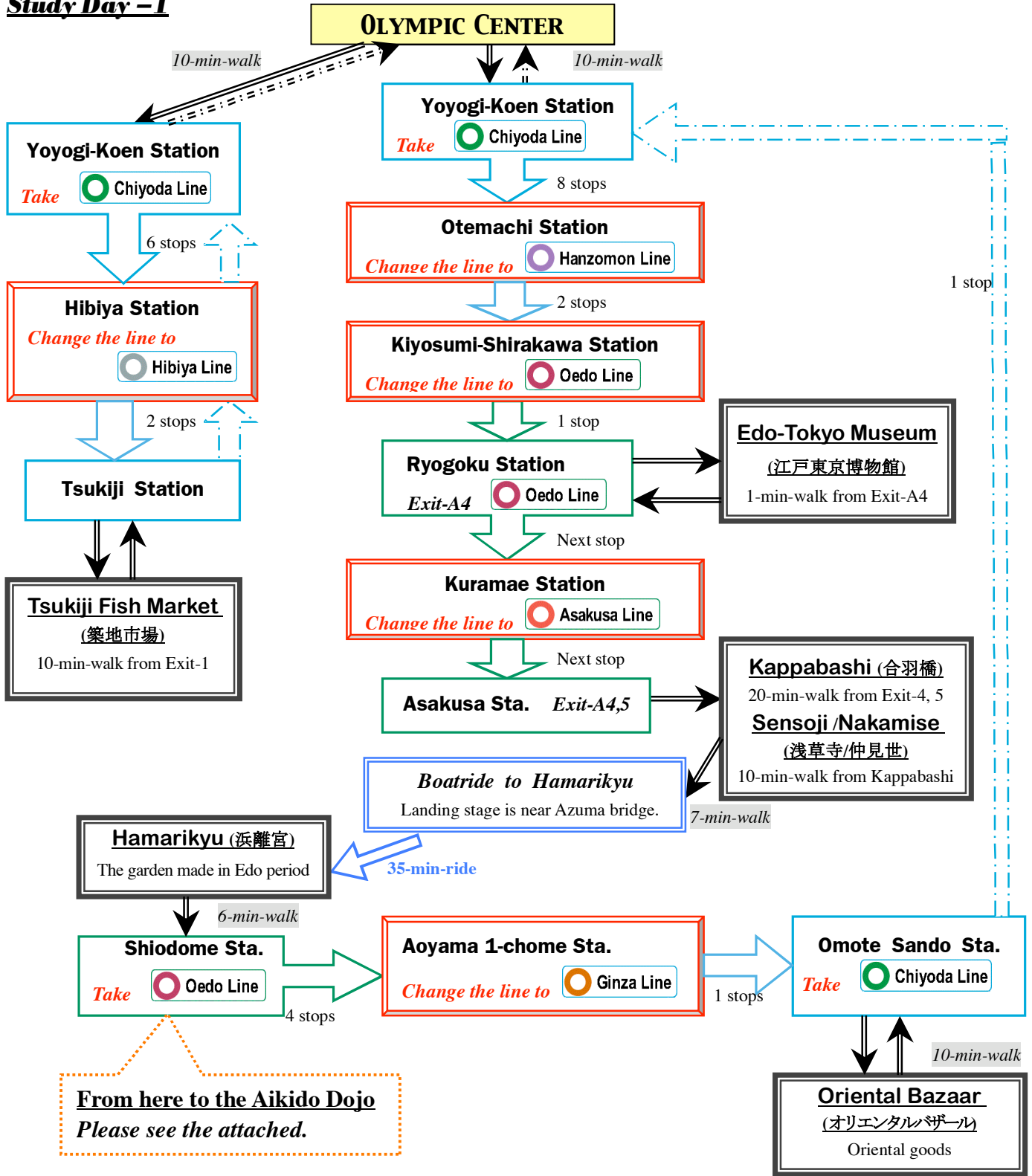


# Juanita High School

## Study Day -1



### Transportation



Tokyo Metro Subway

- GINZA Line
- MARUNOUCHI Line
- CHIYODA Line
- YURAKUCHO Line
- HIBIYA Line
- HANZOMON Line
- TOZAI Line
- NANBOKU Line



TOEI Subway  
Tokyo Metropolitan Government

- OEDO Line
- ASAKUSA Line
- MITA Line
- SHINJUKU Line



Tokyo Waterfront New Transit

- YURIKAMOME
- East Japan Railway Co.
- JR EAST
- ODAKYU Electric Railway
- ODAKYU

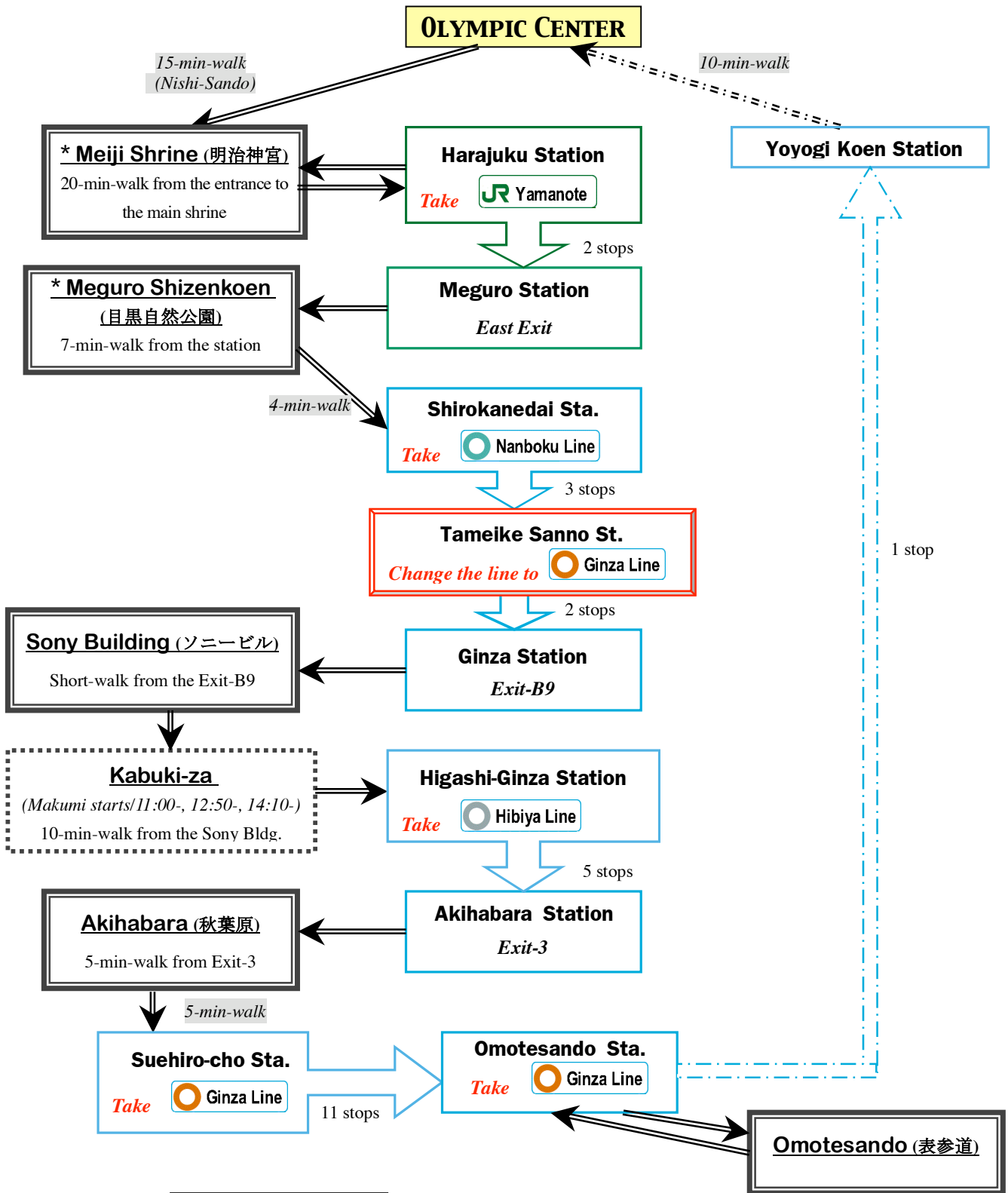
### Timetable - Boatripe

from Asakusa to Hamarikyu

	Mon-Friday	Sat/Sun/Holiday
9	45	45
10	20	15 45
11	15 50	15 45
12	45	15 45
13	15 45	15 45
14	15 45	15 45
15	15 45	15 45

# Juanita High School

## Study Day -2

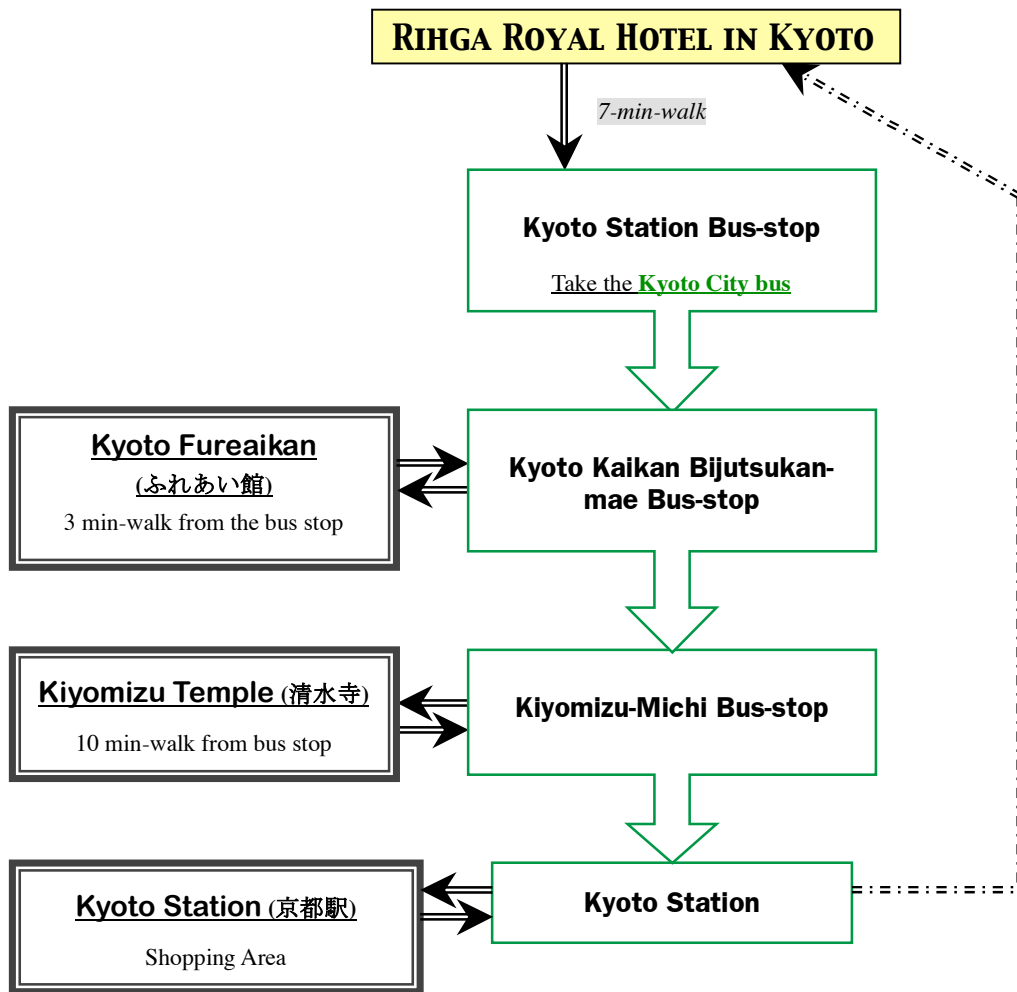


**Transportation**

<p>Tokyo Metro Subway</p> <ul style="list-style-type: none"> <li>GINZA Line</li> <li>CHIYODA Line</li> <li>HIBIYA Line</li> <li>TOZAI Line</li> <li>MARUNOUCHI Line</li> <li>YURAKUCHO Line</li> <li>HANZOMON Line</li> <li>NANBOKU Line</li> </ul>		<p>TOEI Subway Tokyo Metropolitan Government</p> <ul style="list-style-type: none"> <li>OEDO Line</li> <li>ASAKUSA Line</li> <li>MITA Line</li> <li>SHINJUKU Line</li> </ul>	<p>Tokyo Waterfront New Transit</p> <ul style="list-style-type: none"> <li>YURIKAMOME</li> </ul>
		<p>East Japan Railway Co.</p> <ul style="list-style-type: none"> <li>JR EAST</li> </ul>	<p>ODAKYU Electric Railway</p> <ul style="list-style-type: none"> <li>ODAKYU</li> </ul>

# Juanita High School

## Study Day -3



### **Transportation**

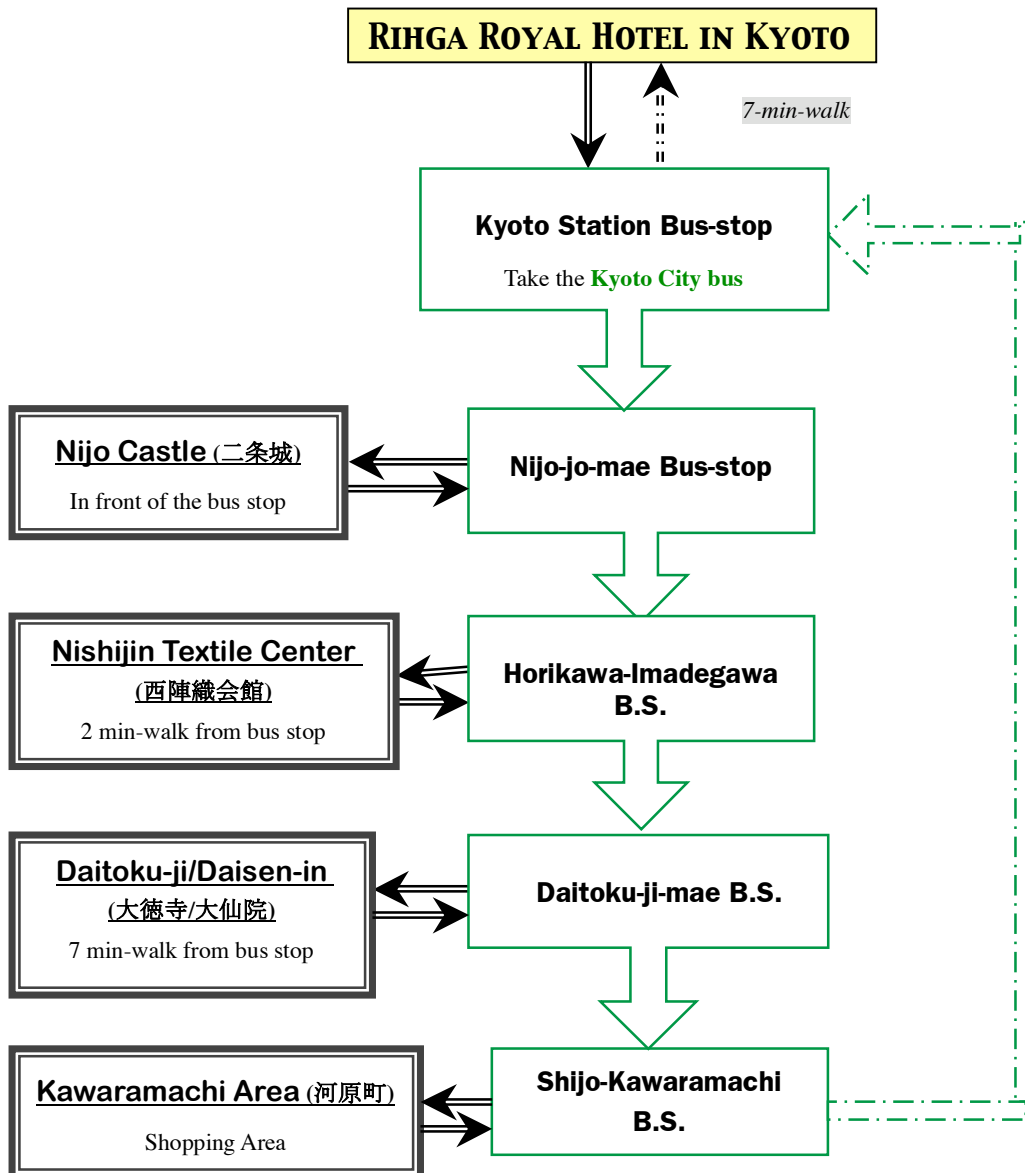
You will use **Kyoto City Bus** for traveling in Central Kyoto.

**One-day City Bus Pass:** The first time you get on the bus, insert your card into the small reading device near the driver where the date will be recorded on the back of the card. The next time you get on the bus, just show the back of the card to the driver.

***Attn: Please check the Bus numbers and the detailed information with NPJ-tourguide in Kyoto.***

# Juanita High School

## Study Day -4



### **Transportation**

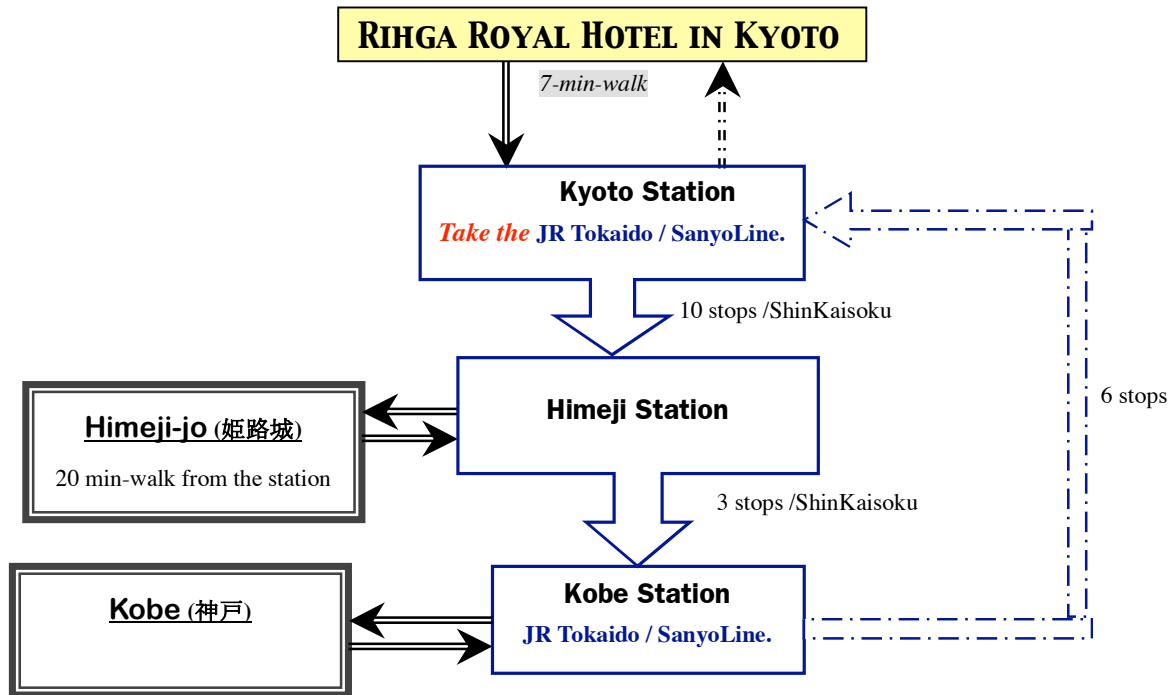
You will use **Kyoto City Bus** for traveling in Central Kyoto.

**One-day City Bus Pass:** The first time you get on the bus, insert your card into the small reading device near the driver where the date will be recorded on the back of the card. The next time you get on the bus, just show the back of the card to the driver.

***Attn: Please check the Bus numbers and the detailed information with NPJ-tourguide in Kyoto.***

# Juanita High School

## Study Day – 5



### **Transportation**

You will use **JR Tokaido/Sanyo Line / Express (新快速)** .

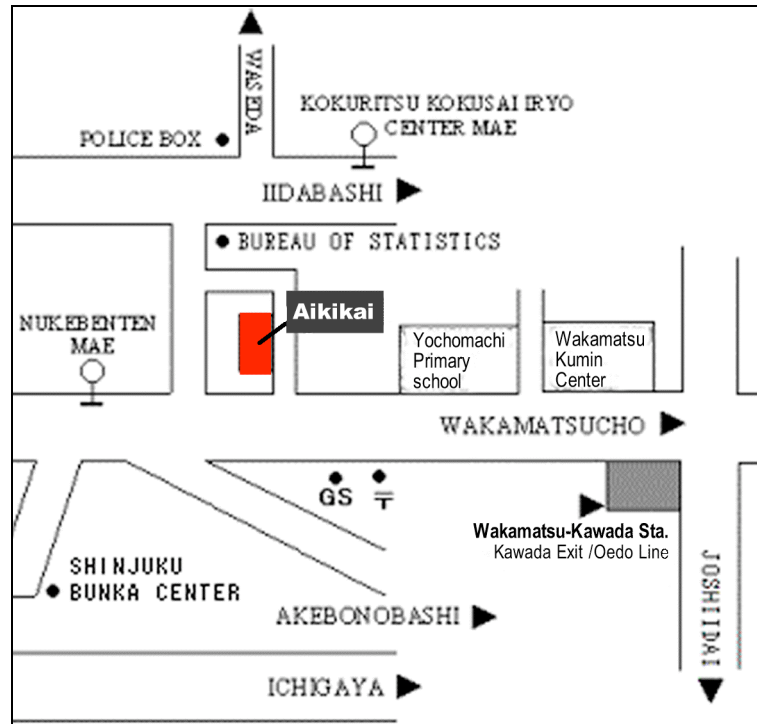
*Attn: Please check the timetable of this line and the detailed information with NPI-tourguide in Kyoto.*

# Aikido Dojo / AIKIKAI(合気会)

17-18 Wakamatsu Cho, Shinjuku-ku

Tel: 03 3203-9236

**Toei Subway: WAKAMATSU KAWADA Station(OEDO line), 5 minutes walk.**



## From Shiodome Station to Dojo

1. Shiodome Station: **Take** Toei  **→** Tocho-mae Station
2. Tocho-mae Station: **Change the car** for Roppongi **→** Wakamatsu-Kawada Sta.

## From Asakusa Station to Dojo (If you leave out Boat ride)

1. Asakusa Station: **Take** Toei  **→** Kuramae Station
2. Kuramae Station: **Change the**  **→** Wakamatsu-Kawada Sta.