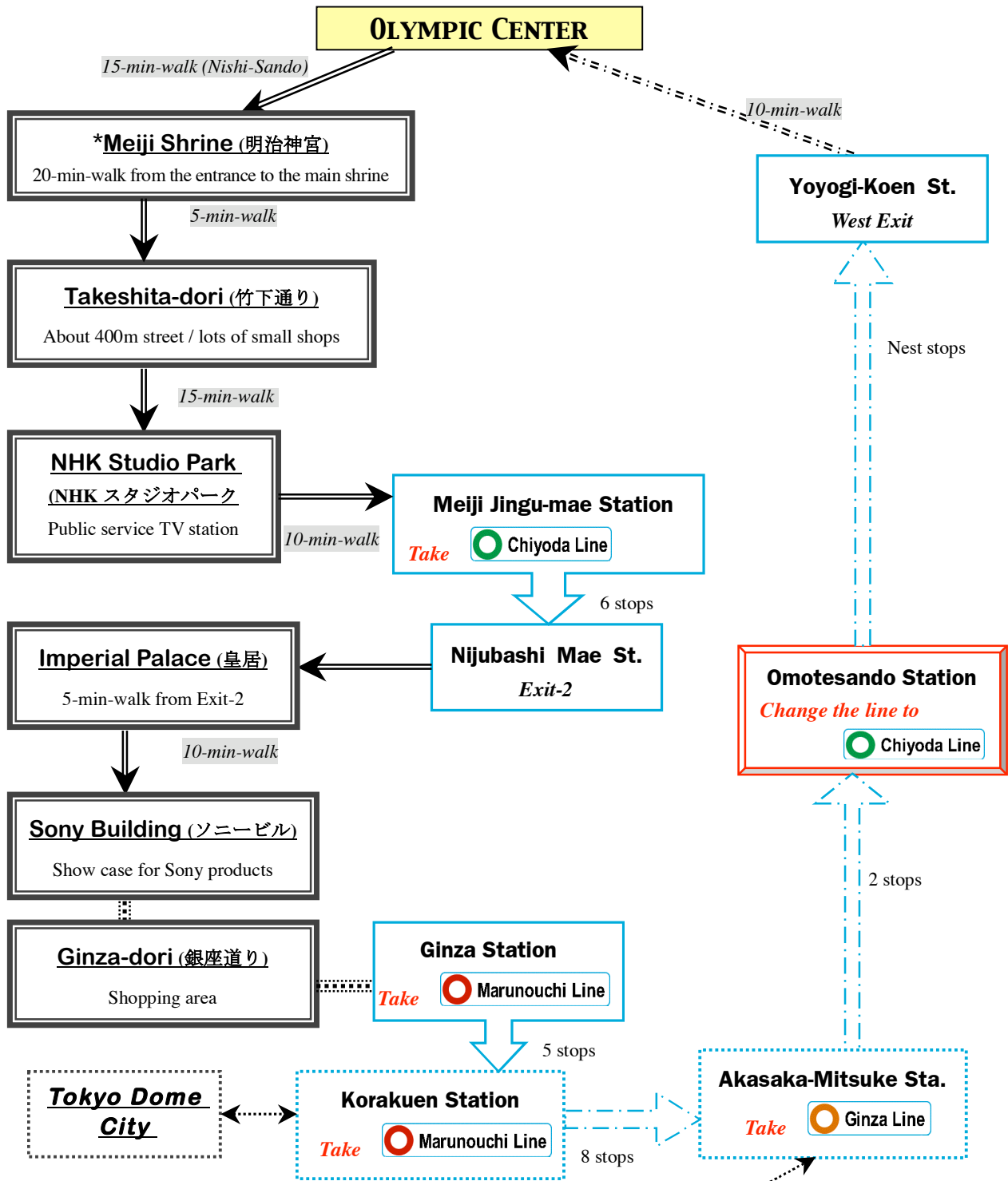


Kelly Walsh High School

Study Day -1



Transportation

<p>Tokyo Metro Subway</p> <ul style="list-style-type: none"> GINZA Line CHİYODA Line HIBIYA Line TOZAI Line MARUNOUCHI Line YURAKUCHO Line HANZOMON Line NANBOKU Line 		<p>TOEI Subway Tokyo Metropolitan Government</p> <ul style="list-style-type: none"> OEDO Line ASAKUSA Line MITA Line SHINJUKU Line 	<p>Tokyo Waterfront New Transit YURIKAMOME</p> <p>East Japan Railway Co. JR EAST</p> <p>ODAKYU Electric Railway ODAKYU</p>
---	--	--	--

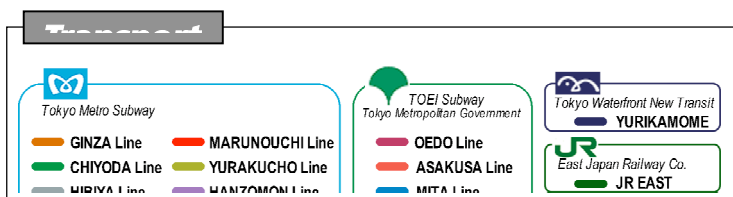
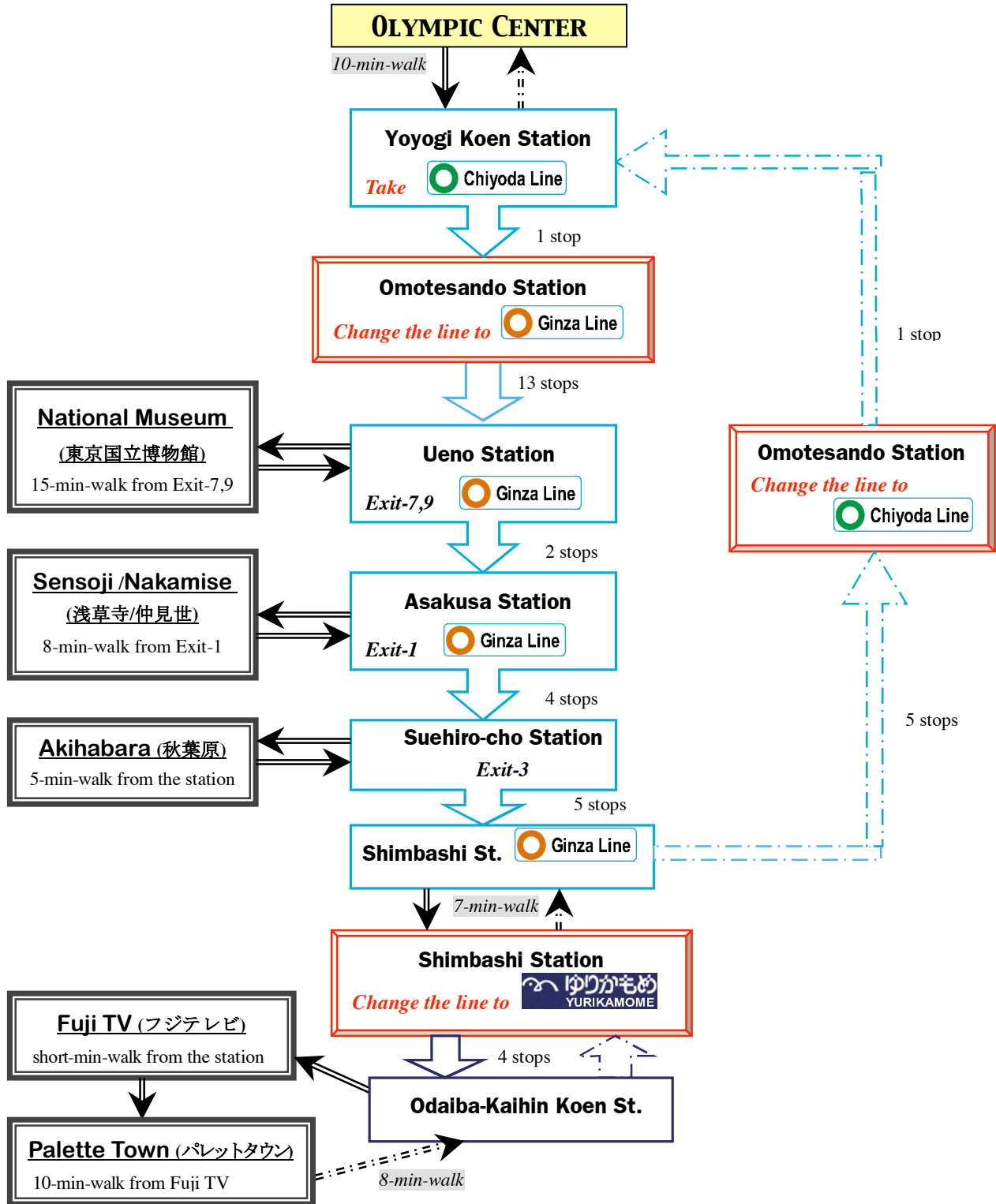
Ninja Akasaka

Akasaka-Mitsuke Station

Ninja Akasaka
Tel: 03-5157-3939
Akasaka Tokyu Plaza 1F

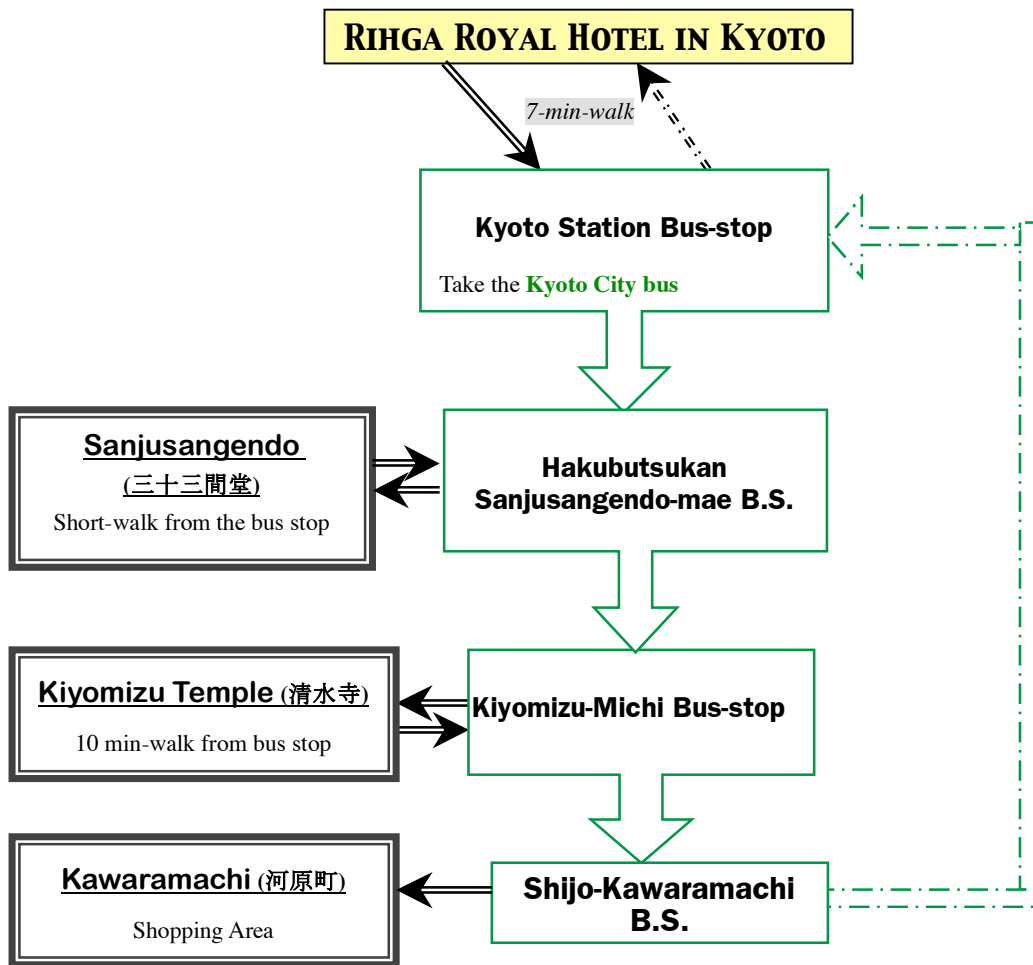
Kelly Walsh High School

Study Day -2



Kelly Walsh High School

Study Day -3



Transportation

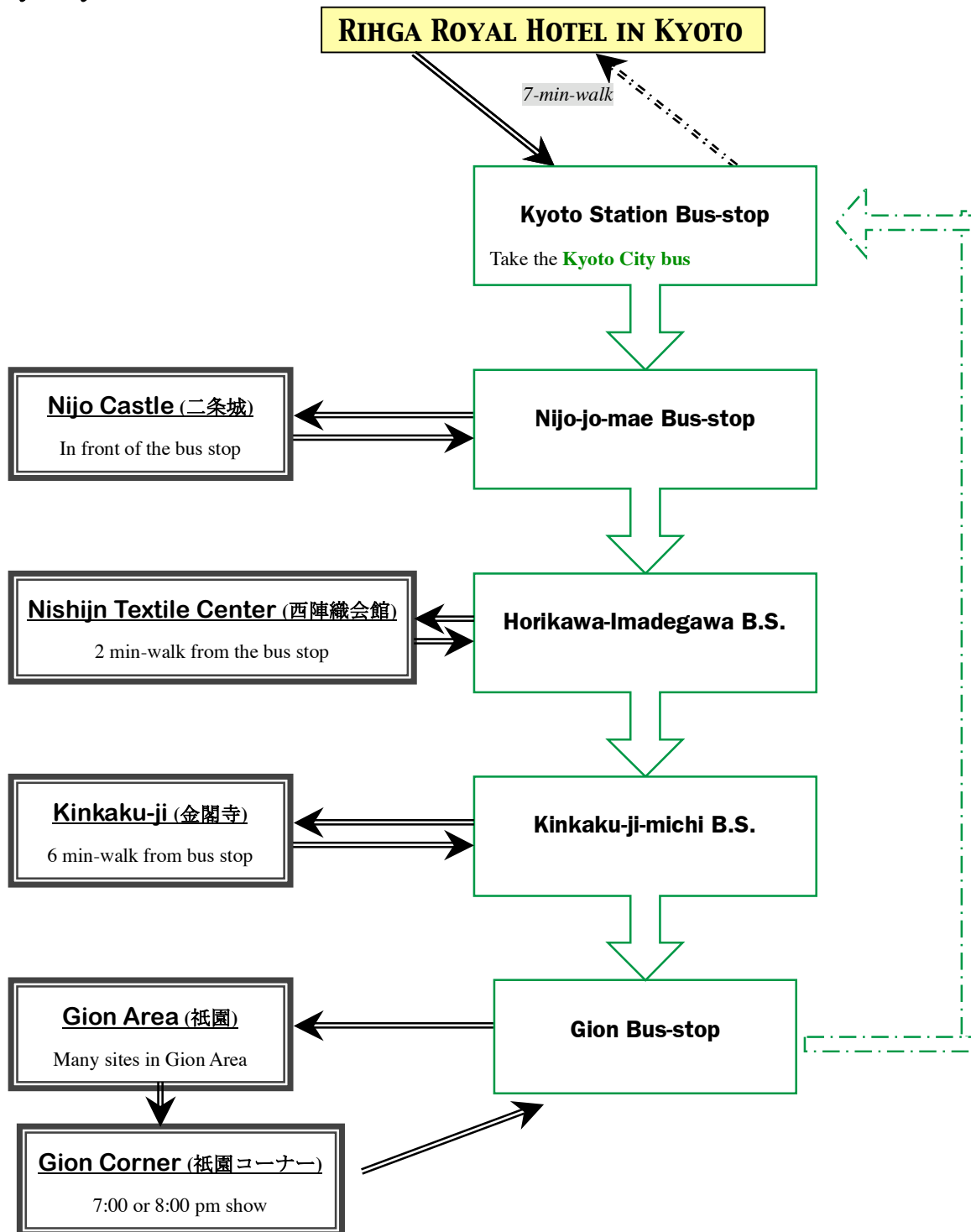
You will use **Kyoto City Bus** for traveling in Central Kyoto.

One-day City Bus Pass: The first time you get on the bus, insert your card into the small reading device near the driver where the date will be recorded on the back of the card. The next time you get on the bus, just show the back of the card to the driver.

Attn: Please check the Bus numbers and the detailed information with NPJ-tourguide in Kyoto.

Kelly Walsh High School

Study Day -4



Transportation

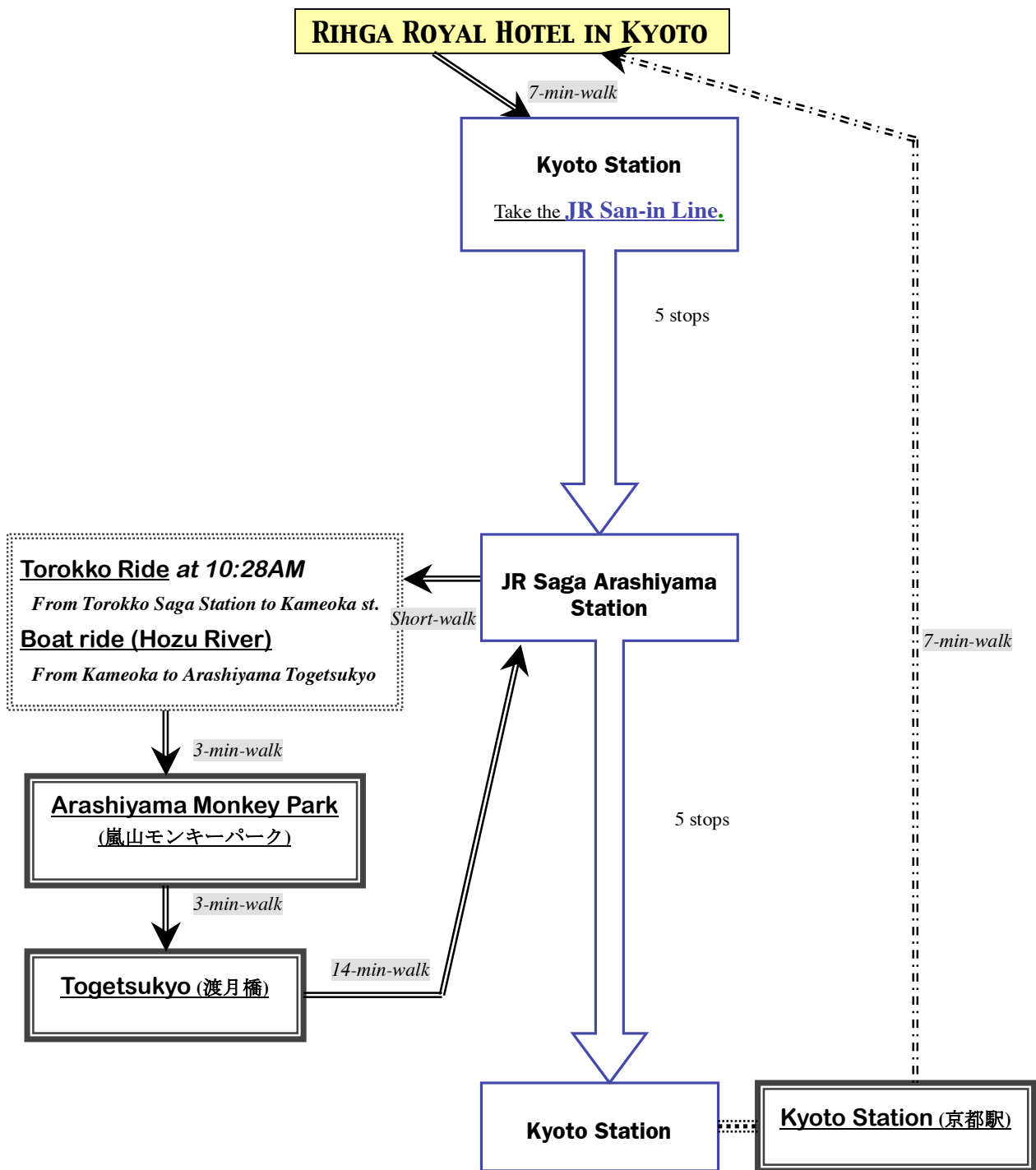
You will use **Kyoto City Bus** for traveling in Central Kyoto.

One-day City Bus Pass: The first time you get on the bus, insert your card into the small reading device near the driver where the date will be recorded on the back of the card. The next time you get on the bus, just show the back of the card to the driver.

Attn: Please check the Bus numbers and the detailed information with NPJ-tourguide in Kyoto.

Kelly Walsh High School

Study Day – 5



Transportation

You will use **JR San-in Line (Sagano Line)**.

Attn: Please check the train schedule and the detailed information with NPJ-tourguide in Kyoto.