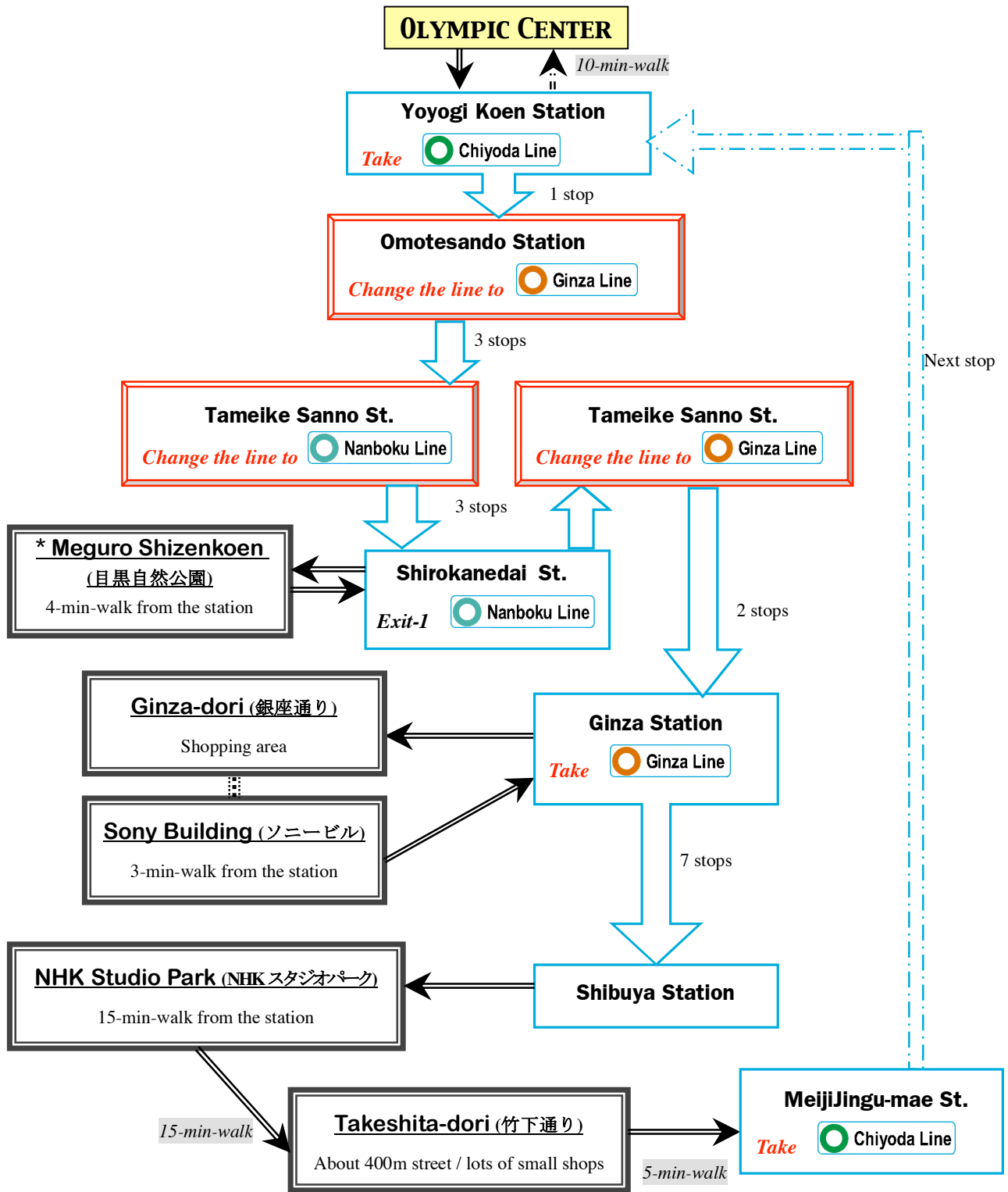


# Saginaw Arts & Sciences Academy

## Study Day -1

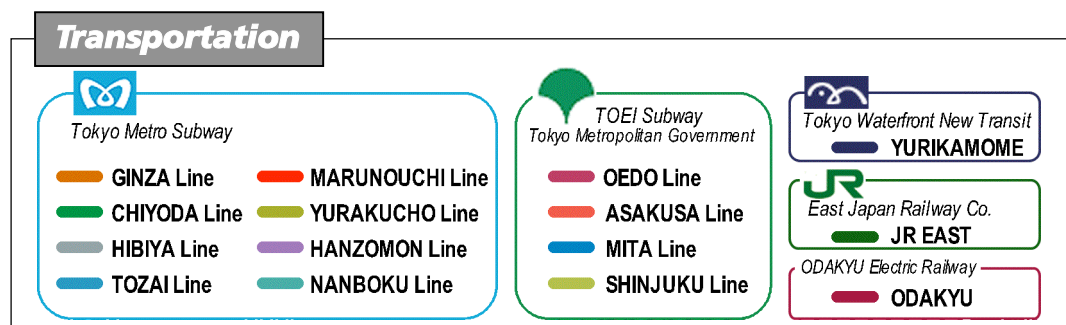
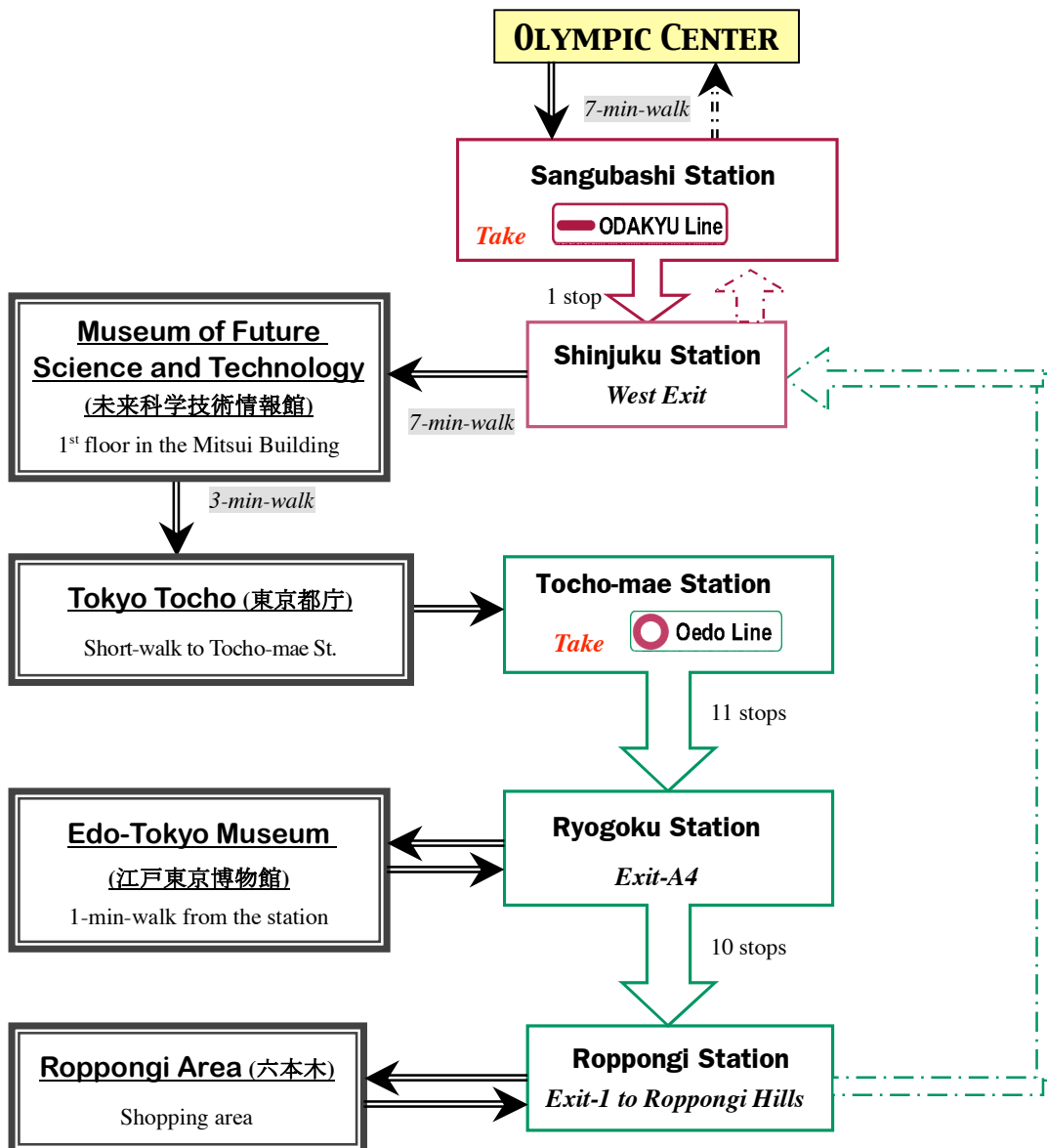


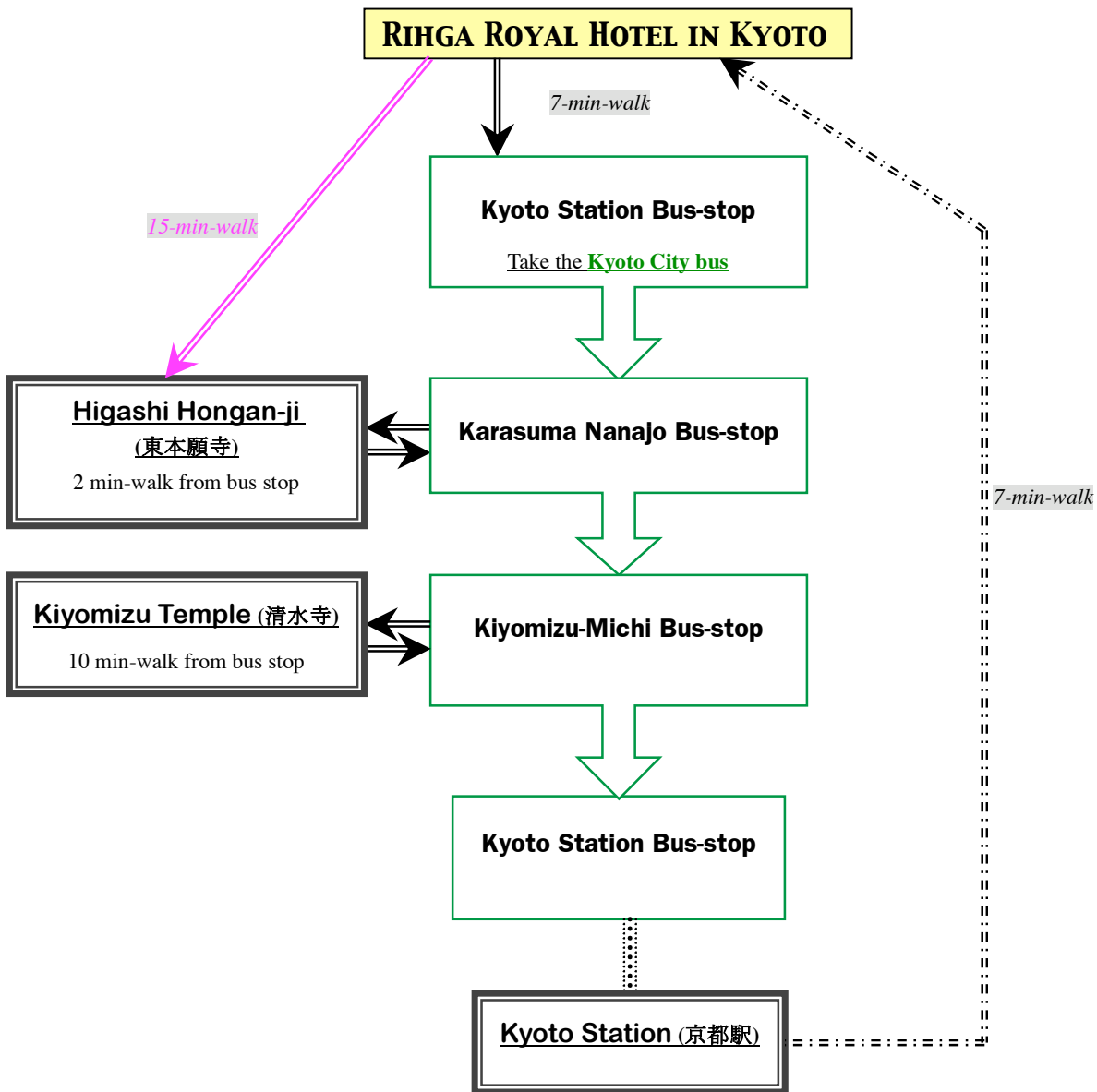
**Transportation**

|   |  |  |   |
|---|--|--|---|
| <p>Tokyo Metro Subway</p> <ul style="list-style-type: none"> <li> GINZA Line</li> <li> CHIYODA Line</li> <li> HIBIYA Line</li> <li> TOZAI Line</li> <li> MARUNOUCHI Line</li> <li> YURAKUCHO Line</li> <li> HANZOMON Line</li> <li> NANBOKU Line</li> </ul> |  | <p>TOEI Subway<br/>Tokyo Metropolitan Government</p> <ul style="list-style-type: none"> <li> OEDO Line</li> <li> ASAKUSA Line</li> <li> MITA Line</li> <li> SHINJUKU Line</li> </ul> | <p>Tokyo Waterfront New Transit</p> <ul style="list-style-type: none"> <li> YURIKAMOME</li> </ul> <p>East Japan Railway Co.</p> <ul style="list-style-type: none"> <li> JR EAST</li> </ul> <p>ODAKYU Electric Railway</p> <ul style="list-style-type: none"> <li> ODAKYU</li> </ul> |
|---|--|--|---|

# Saginaw Arts & Sciences Academy

## Study Day -2





***Special Info:*** on 21st / The Kobo Flea Market is held at **To-ji(東寺)** from 8:00 to 16:00.

### **Transportation**

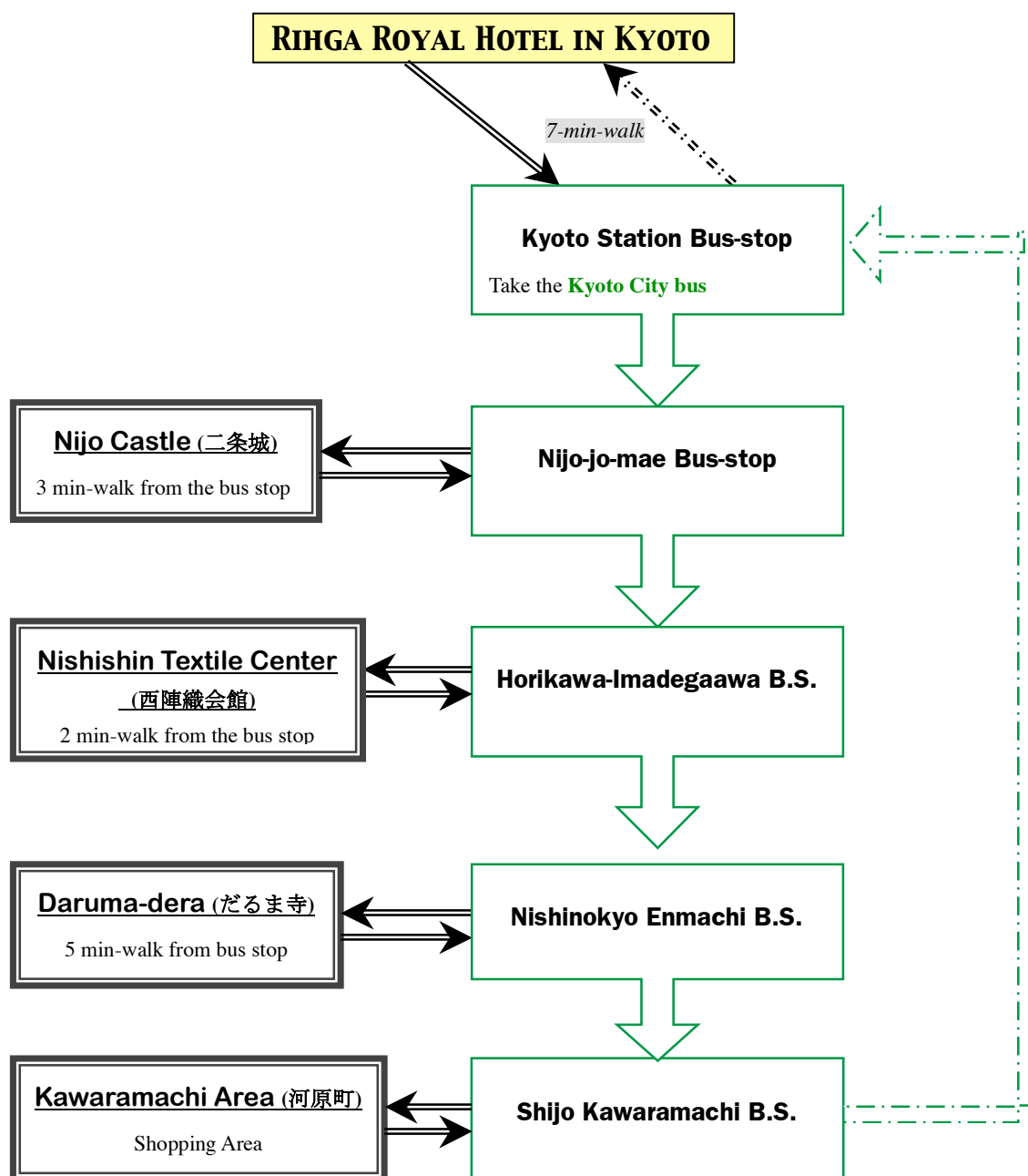
You will use **Kyoto City Bus** for traveling in Central Kyoto.

**One-day City Bus Pass:** The first time you get on the bus, insert your card into the small reading device near the driver where the date will be recorded on the back of the card. The next time you get on the bus, just show the back of the card to the driver.

***Attn:*** Please check the **Bus numbers and the detailed information with NPJ-tourguide in Kyoto.**

# Saginaw Arts & Sciences Academy

## Study Day -4



### **Transportation**

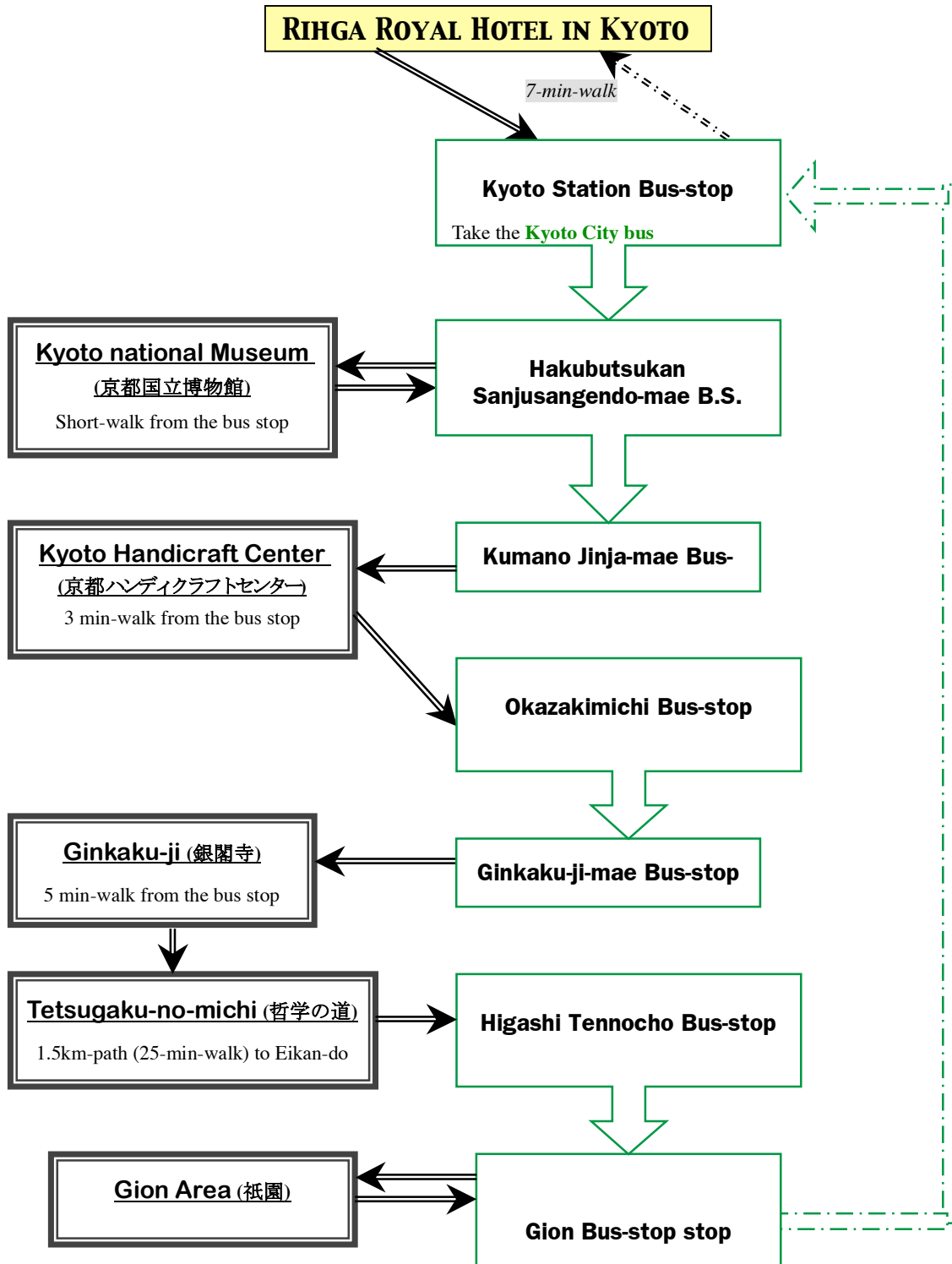
You will use **Kyoto City Bus** for traveling in Central Kyoto.

**One-day City Bus Pass:** The first time you get on the bus, insert your card into the small reading device near the driver where the date will be recorded on the back of the card. The next time you get on the bus, just show the back of the card to the driver.

***Attn: Please check the Bus numbers and the detailed information with NPJ-tourguide in Kyoto.***

# Saginaw Arts & Sciences Academy

## Study Day – 5



### **Transportation**

You will use **Kyoto City Bus** for traveling in Central Kyoto.

**One-day City Bus Pass:** The first time you get on the bus, insert your card into the small reading device near the driver where the date will be recorded on the back of the card. The next time you get on the bus, just show the back of the card to the driver.

**Attn:** *Please check the Bus numbers and the detailed information with NPJ-tourguide in Kyoto.*