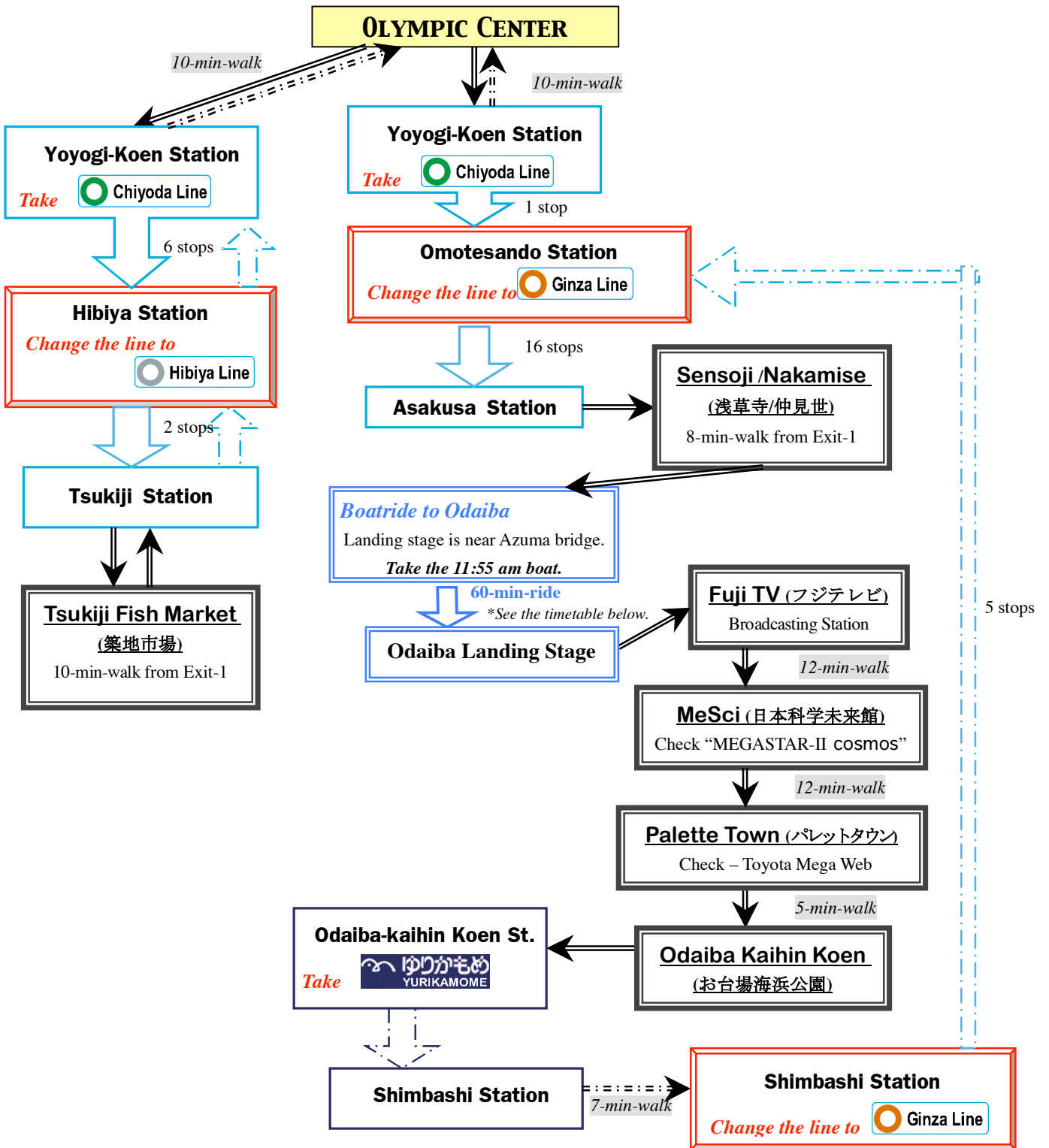


King Kekaulike High School

Study Day -1



Transportation



Tokyo Metro Subway

- GINZA Line
- CHIYODA Line
- HIBIYA Line
- TOZAI Line
- MARUNOUCHI Line
- YURAKUCHO Line
- HANZOMON Line
- NANBOKU Line



TOEI Subway
Tokyo Metropolitan Government

- OEDO Line
- ASAKUSA Line
- MITA Line
- SHINJUKU Line



Tokyo Waterfront New Transit
YURIKAMOME



East Japan Railway Co.

JR EAST

ODAKYU Electric Railway

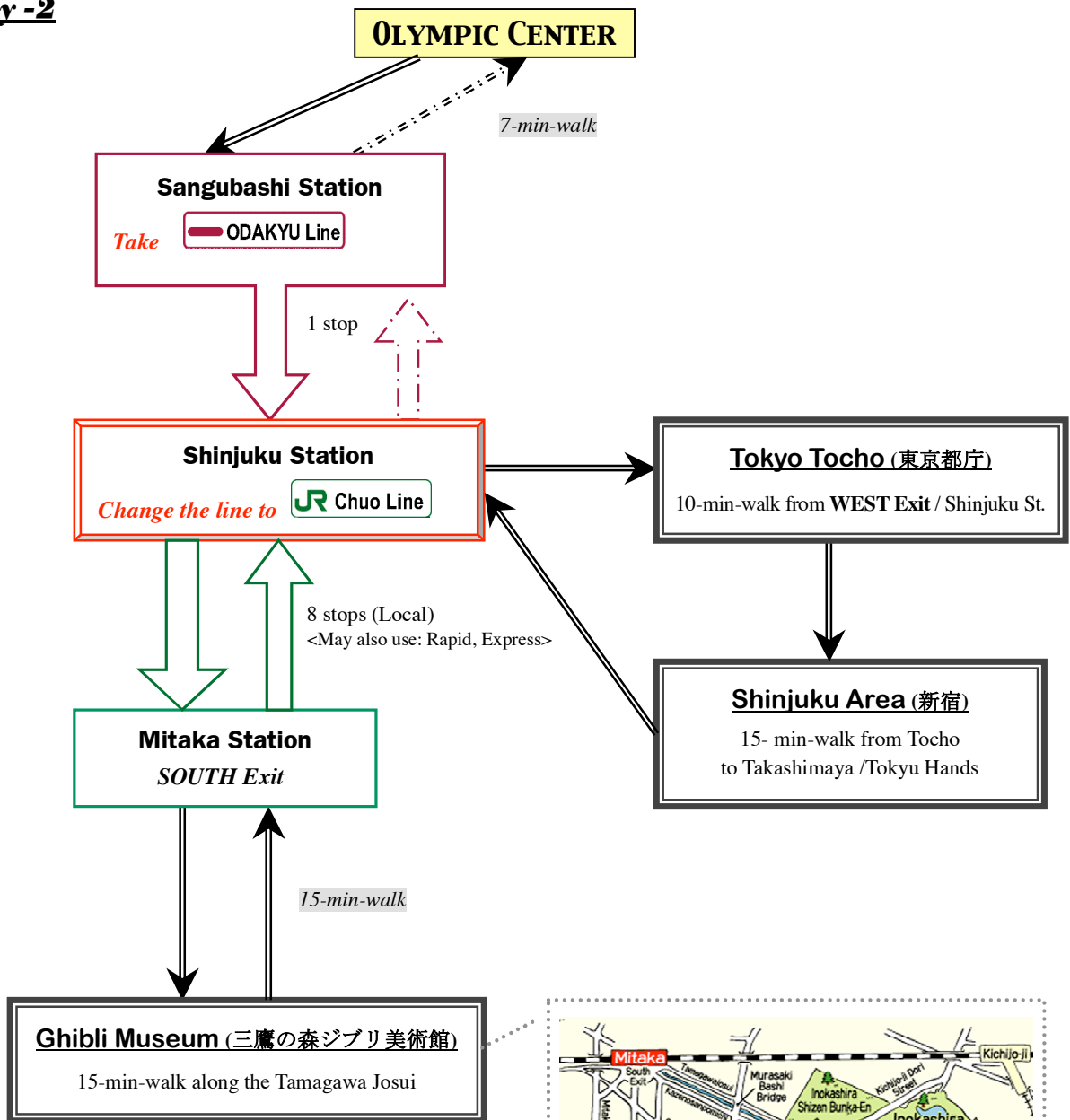
ODAKYU

Timetable - Boatride from Asakusa to Odaiba

Asakusa		Odaiba
9:55	→	10:50
11:55	→	12:50
13:55	→	14:50
15:55	→	16:50

King Kekaulike High School

Study Day -2

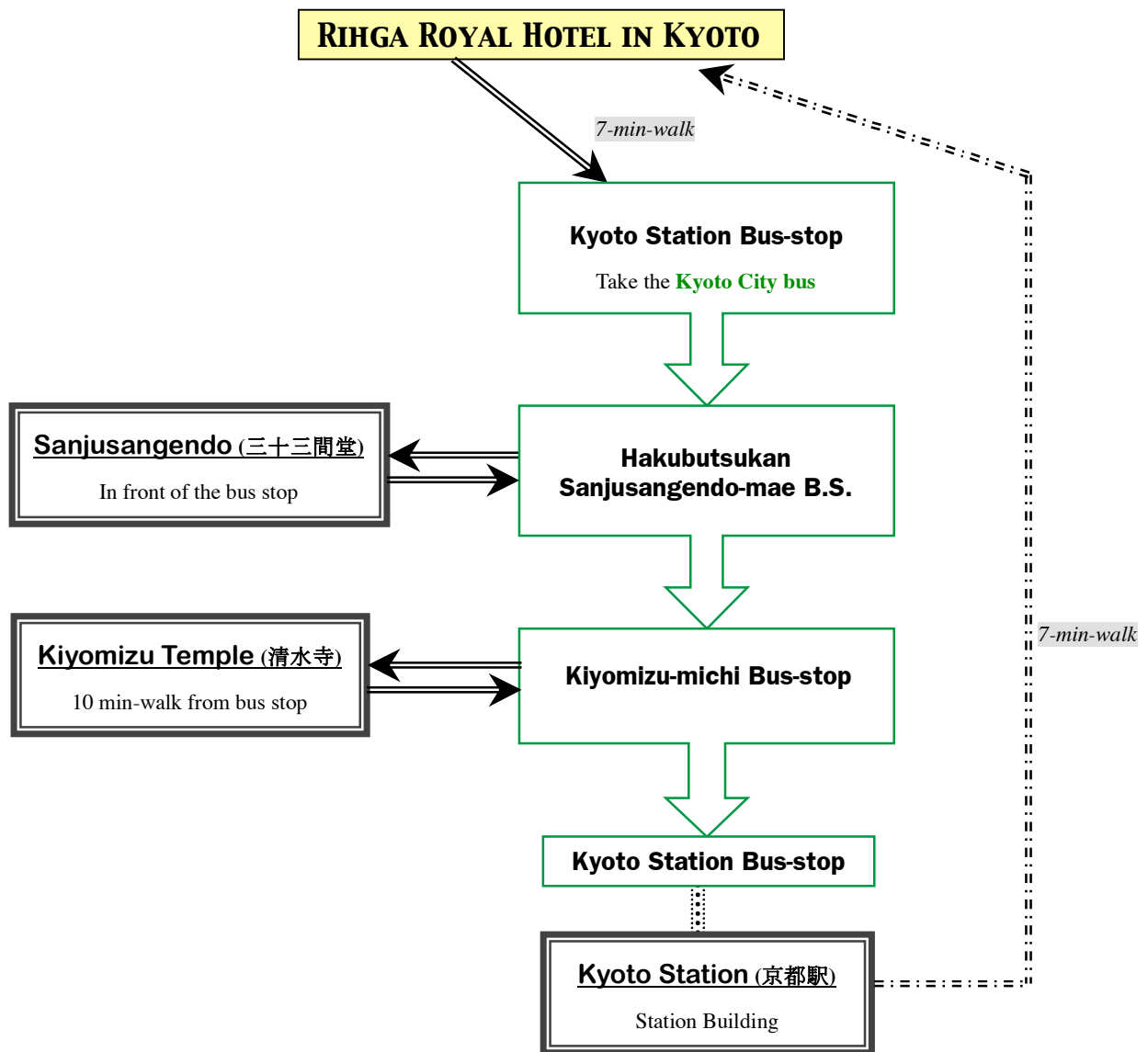


Transportation

<p>Tokyo Metro Subway</p> <ul style="list-style-type: none"> GINZA Line CHIYODA Line HIBIYA Line TOZAI Line MARUNOUCHI Line YURAKUCHO Line HANZOMON Line NANBOKU Line 	<p>TOEI Subway Tokyo Metropolitan Government</p> <ul style="list-style-type: none"> OEDO Line ASAKUSA Line MITA Line SHINJUKU Line 	<p>Tokyo Waterfront New Transit YURIKAMOME</p> <p>East Japan Railway Co. JR EAST</p> <p>ODAKYU Electric Railway ODAKYU</p>
---	--	--

King Kekaulike High School

Study Day -3



Special Info: on 21st / The Kobo Flea Market is held at **To-ji(東寺)** from 8:00 to 16:00.

Transportation

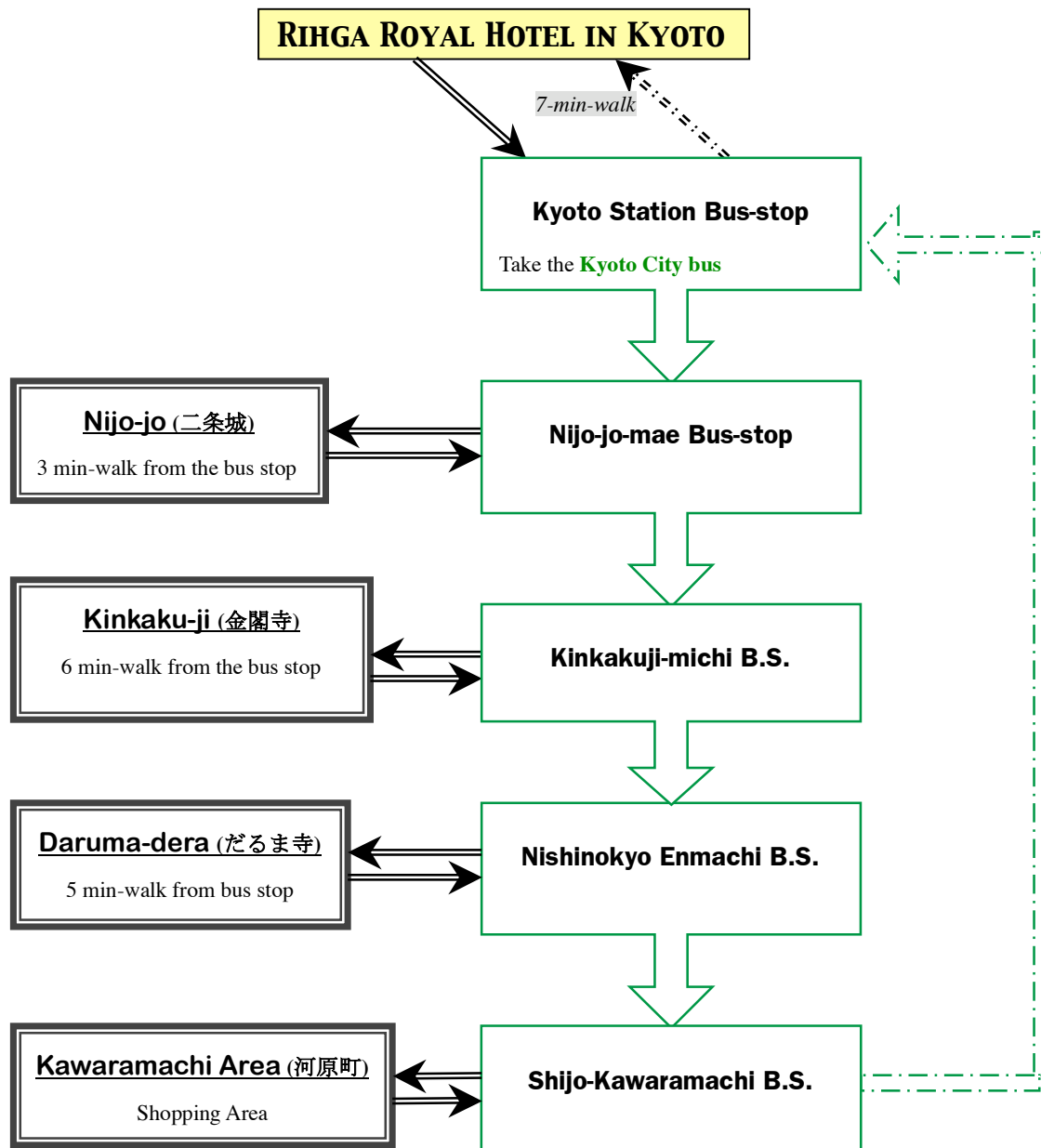
You will use **Kyoto City Bus** for traveling in Central Kyoto.

One-day City Bus Pass: The first time you get on the bus, insert your card into the small reading device near the driver where the date will be recorded on the back of the card. The next time you get on the bus, just show the back of the card to the driver.

Attn: Please check the **Bus numbers and the detailed information with NPJ-tourguide in Kyoto.**

King Kekaulike High School

Study Day -4



Transportation

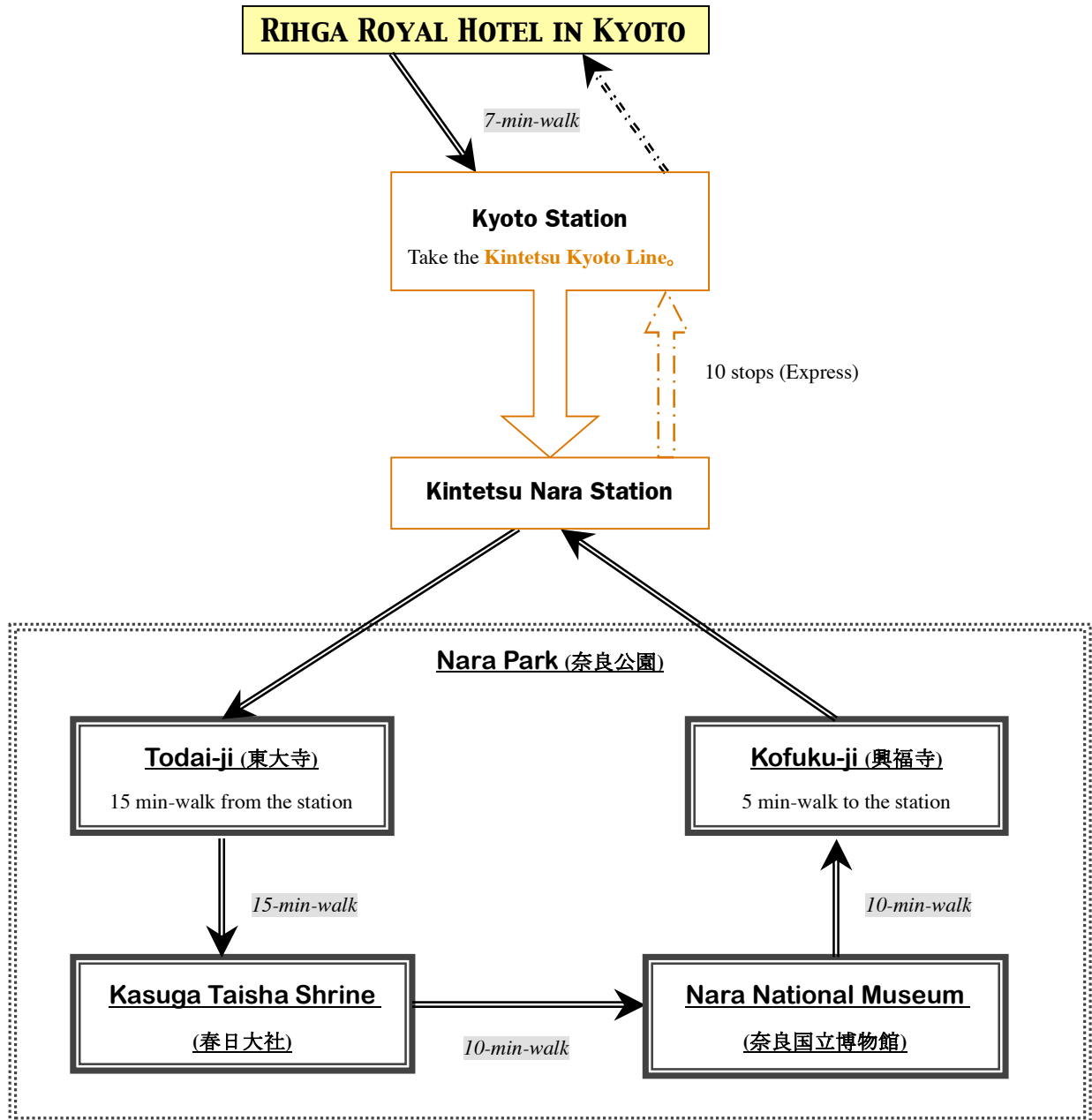
You will use **Kyoto City Bus** for traveling in Central Kyoto.

One-day City Bus Pass: The first time you get on the bus, insert your card into the small reading device near the driver where the date will be recorded on the back of the card. The next time you get on the bus, just show the back of the card to the driver.

Attn: Please check the Bus numbers and the detailed information with *NPI-tourguide in Kyoto*.

King Kekaulike High School

Study Day – 5



Transportation

You will use **Kintetsu Kyoto Line / the express train(急行)** to go to Nara.

Please take the express train (急行) .

Attn: Please check the timetable of this line and the detailed information with [NPJ-tourguide in Kyoto](#).